

E30/E35 MONTAGE

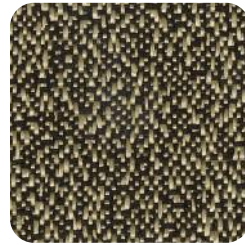
Foundations



E34-80



E31-80



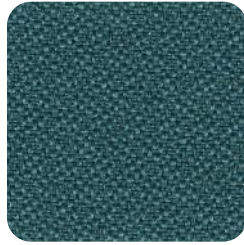
E30-80



E33-80



E35-20



E33-30



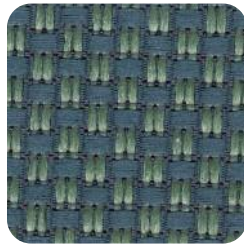
E34-61



E35-62



E33-20



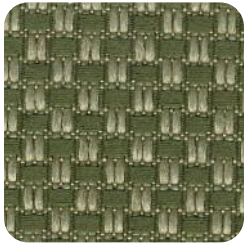
E34-30



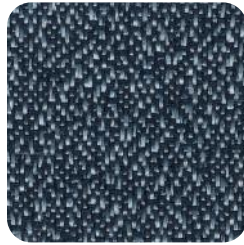
E31-60



E32-60



E34-20



E30-40



E35-61



E34-60



E32-20



E35-40



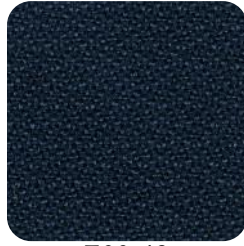
E31-61



E30-60



E30-20



E33-40



E34-00



E35-60



PATTERN E30

Width: 54 Inches
Contents: 100% Polyester, Latex Backing
Abrasion: Rated Heavy Duty, 45,000 Double Rubs, minimum
Pattern Repeat: None, Shown Railroaded
Fabric Grade: 4

PATTERN E31

Width: 54 Inches
Contents: 100% Polyester, Acrylic Backing
Abrasion: Rated Heavy Duty, 102,000 Double Rubs, minimum
Pattern Repeat: $\frac{1}{8}$ "L, $\frac{1}{8}$ "W
Fabric Grade: 4

PATTERN E32

Width: 54 Inches
Contents: 100% Polyester, Acrylic Backing
Abrasion: Rated Heavy Duty, 192,000 Double Rubs, minimum
Pattern Repeat: $\frac{1}{4}$ "L, $\frac{1}{2}$ "W
Fabric Grade: 4

PATTERN E33

Width: 54 Inches
Contents: 100% Polyester, Acrylic Backing
Abrasion: Rated Heavy Duty, 210,000 Double Rubs, minimum
Pattern Repeat: None, Shown Railroaded
Fabric Grade: 4

PATTERN E34

Width: 54 Inches
Contents: 100% Polyester, Acrylic/Latex Backing
Abrasion: Rated Heavy Duty, 102,000 Double Rubs, minimum
Pattern Repeat: $\frac{1}{4}$ "L, $\frac{1}{4}$ "W, Shown Railroaded
Fabric Grade: 4

PATTERN E35

Width: 54 Inches
Contents: 100% Polyester, Acrylic Backing
Abrasion: Rated Heavy Duty, 39,000 Double Rubs, minimum
Pattern Repeat: 1"L, 1"W, Shown Railroaded
Fabric Grade: 4

GSA FABRICS

Direct all orders to:

Flexsteel Industries, Inc.
P.O. Box 825
Starkville, MS 39760-0825

Telephone: 662-323-5481

Fax: 800-444-5481

E-mail: afrazier@flexsteel.com



Flexsteel[®]
Commercial Seating

www.flexsteel.com/gsa